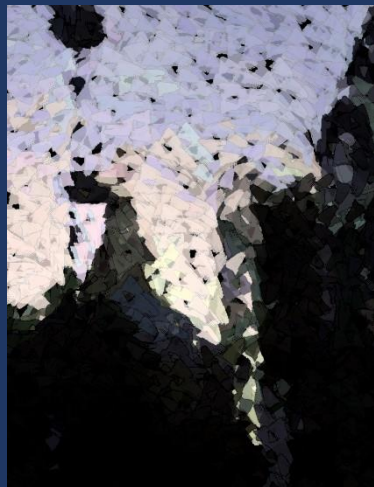
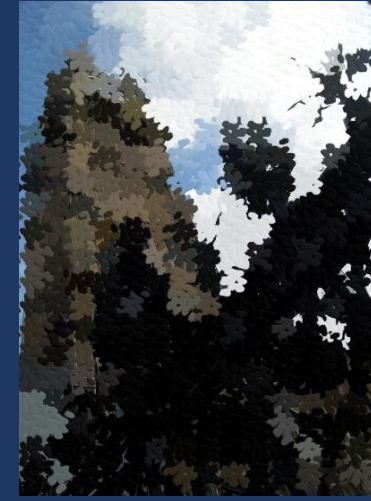
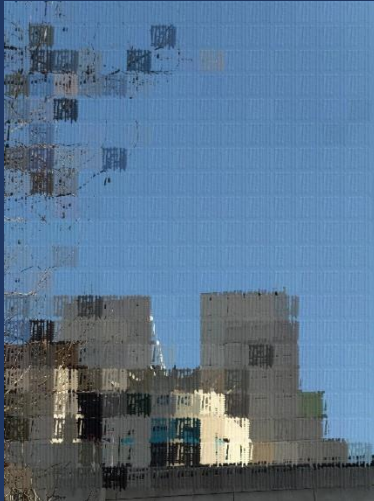


What and Where?

Here are six photos of London, all taken by JJ Ward, and all in disguise. What are they? And where are they?



Scroll down for the answers!

Answers



(Left) The MI6 Building, 85 Albert Embankment, London SE1 7TP.



Charing Cross Station, Strand, London WC2 5HS.



Big Ben, Westminster London SW1A 0AA.



St Paul's Cathedral, City of London.



Marble Arch, junction of Oxford Street, Park Lane, and Edgware Road.



"The Walkie Talkie", 20 Fenchurch Street.

Scores out of six: 0 = Well done, you're (probably) normal. 1 = Good guess; 2 = Two good guesses; 3 = How long did it *take* you? 4 = You need to stay in more; 5 = You must have scrolled down. Yes, you did! Don't deny it! 6 = For goodness sake, *six*? *SIX*? I hope you're proud. Because that wasn't the intention. Honestly, it wasn't.